

## HILL END ECOHOUSE

We've written about the incredibly progressive work of Australian architects before. There is a unique situation in which location breeds ingenuity, where each new build is literally a new footprint on the architectural landscape. Brisbane firm Riddel Architecture has just finished one of the most impressive pieces of truly sustainable residential architecture. The firm is calling it a landmark sustainable home and it's not hard to see why. From the top to the bottom each material, technique and detail has been assessed rigorously for its sustainable, social and environmental credentials. Built on a relatively small waterfront site, the architects began by dismantling the previous property (80 per cent of which was re-used in the new build) before creating a 6 Star energy rated home. Grey water is recycled, rain-water is filtered and used as the main water supply, daylight is maximised using the project's intelligently-placed windows and even the paint has been specced to maximise the amount of light reflected around the house. In our eyes the Hill End Ecohouse is a blueprint for what is actually possible with a little determination. Its spec-list (available to soak up on its blog, [hellendco.blogspot.com](http://hellendco.blogspot.com)) is well worth a read. [www.rara.net.au](http://www.rara.net.au)



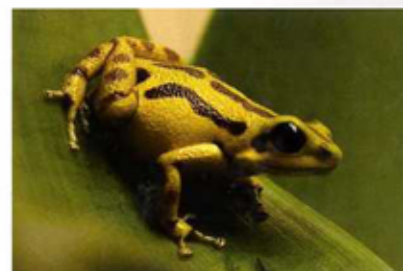
## STEAM ENGINE RETURNS

Beckmans student Oscar Andersson took on an ambitious degree project revisiting the industrial age and creating his own steam engine. The project, *Is Steam Our Future?*, looked at the steam engine as a possible solution to our current environmental situation. "Today industrialisation stands for pollution, acidification and deforestation of land," Andersson noted. Boldly stating that he wants to build his own future and inspire others to do the same, it is however debatable whether the steam engine is really the answer to our planets prayers. That said, you cannot help but be inspired by the culmination of his studies; a noisy, complicated piece of machinery which was so dominating and aggressive sounding that it had to be given its own room. [www.beckmans.se/oscar-andersson](http://www.beckmans.se/oscar-andersson)



## NOTIONS OF A HYBRID

Linda Shamma Östrand is a student at Konstfack whose cerebral work takes in an exploration of mixed cultural identity or, in her words, the notions of being a hybrid. The chosen vehicle to demonstrate her chosen topic is her self-bred hybrid frog *Oophaga vicentei* x *Oophaga pumilio*. The frog's scientific name contains the 'x' to indicate that it is a hybrid variety with the names on either side denoting the species of its origin. "As a child of parents from different countries, I am always compelled to describe my parents' origin instead of my own when people ask me where I come from," Östrand explains. "It led me to wonder whether I am bearing a seemingly unknown problem. By breeding a hybrid fertile frog and simultaneously writing a diary of reflections in my everyday life, I am exploring hybrid disciplines in an attempt to understand the hybrid concept," she clarifies. Some critics argue that emerging students are losing their poignancy and relevance due to aspirations of grandeur and ego-driven projects. Through her unique frog and her inward-looking questioning of identity, Östrand has given reason for the viewer to talk about her conceptual, didactic art without damning its visual medium. [www.konstfack2010.se/master/maapr/linda-shamma-ostrand](http://www.konstfack2010.se/master/maapr/linda-shamma-ostrand)



## SCULPTURAL PHILOSOPHY

Eskil Loftsson showed a quite terrifyingly apocalyptic body of sculpture during the Spring Exhibition at Stockholm's Konstfack School of Art and Design. Citing that 'Everyday aestheticism' scares him, the designer sought to highlight the problems associated with economic demands and technical progression in his work. "This is an aestheticism which seems to want to equate itself with, and harness, nature. I believe that this is a conceited and primitive way to assert human divinity," explains the artist, a bachelor in metal design. Loftsson's approach is to highlight things as they really are, to strip our aesthetic perspective back to how we thought as children. A stain on a white wall is a stain on a white wall. So Loftsson's project is exactly what it says on the tin. His piece *Eutanasi* is a sculpture made from a dead badger, the pieces which look like splayed mice are indeed splayed mice. There is no denying this work's impact when you realise that the artist is simply trying to make us question what we have around us. A thought provoking project. [eloftsson@hotmail.com](mailto:eloftsson@hotmail.com)